

# **eMobility and eHealth: Next steps**

**Luis M. Correia**

*eMobility WG on Leading-Edge Applications, Chairman*

*and*

*IST – Tech. Univ. Lisbon, Lisbon, Portugal*

# Outline



- eMobility
- The Working Group on Applications
- eHealth and Inclusion

# eMobility ?



- eMobility is the European Technological Platform in the area of Mobile & Wireless Communications.
- Its major objectives are:  
*To reinforce Europe's leadership in mobile and wireless communications and services and to master the future development of this technology, so that it best serves Europe's citizens and the European economy.*

# Activities



- To establish a Strategic Research Agenda (SRA) for R&D.
- To develop a strategy for a growing involvement of sector actors.
- To establish links with related activities and sectors.
- To bring together national and local authorities.
- To establish peer-to-peer relations with Asian & American research programmes.

# Membership

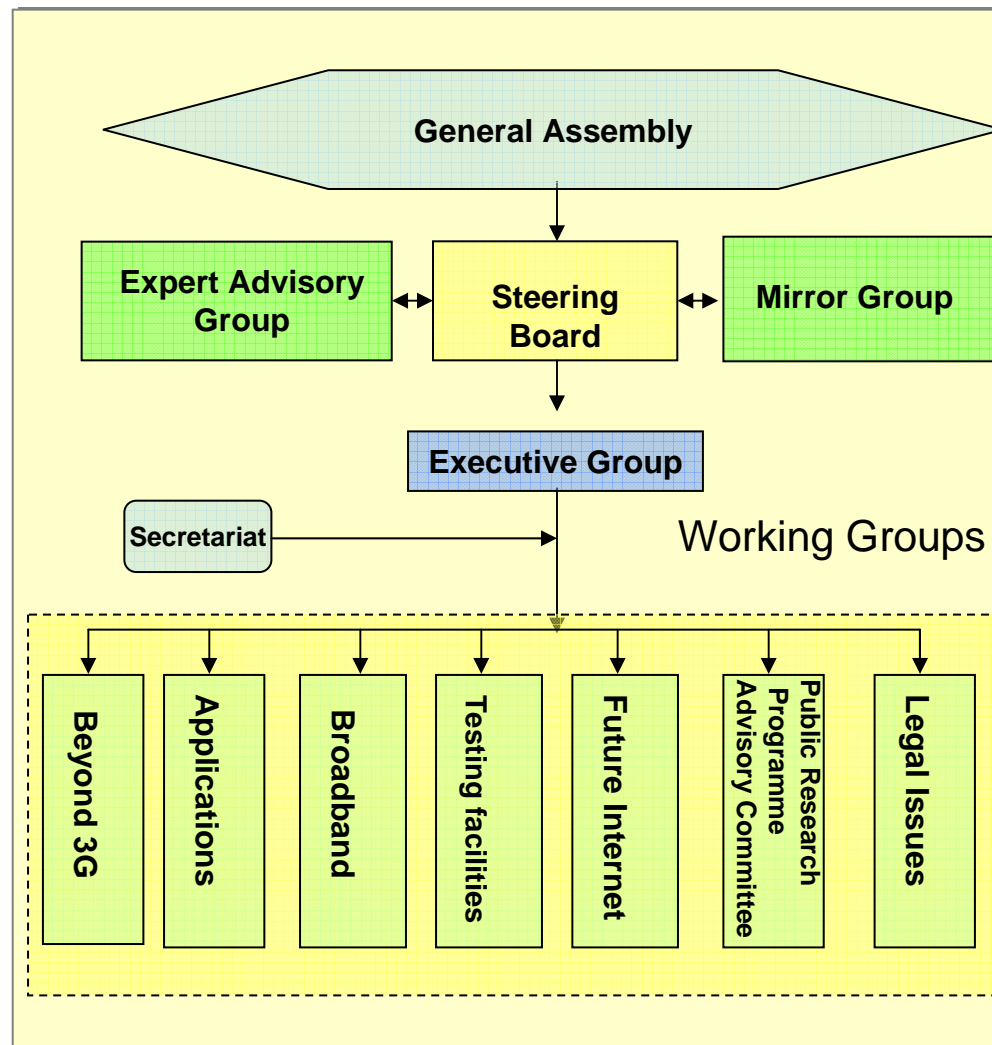


540

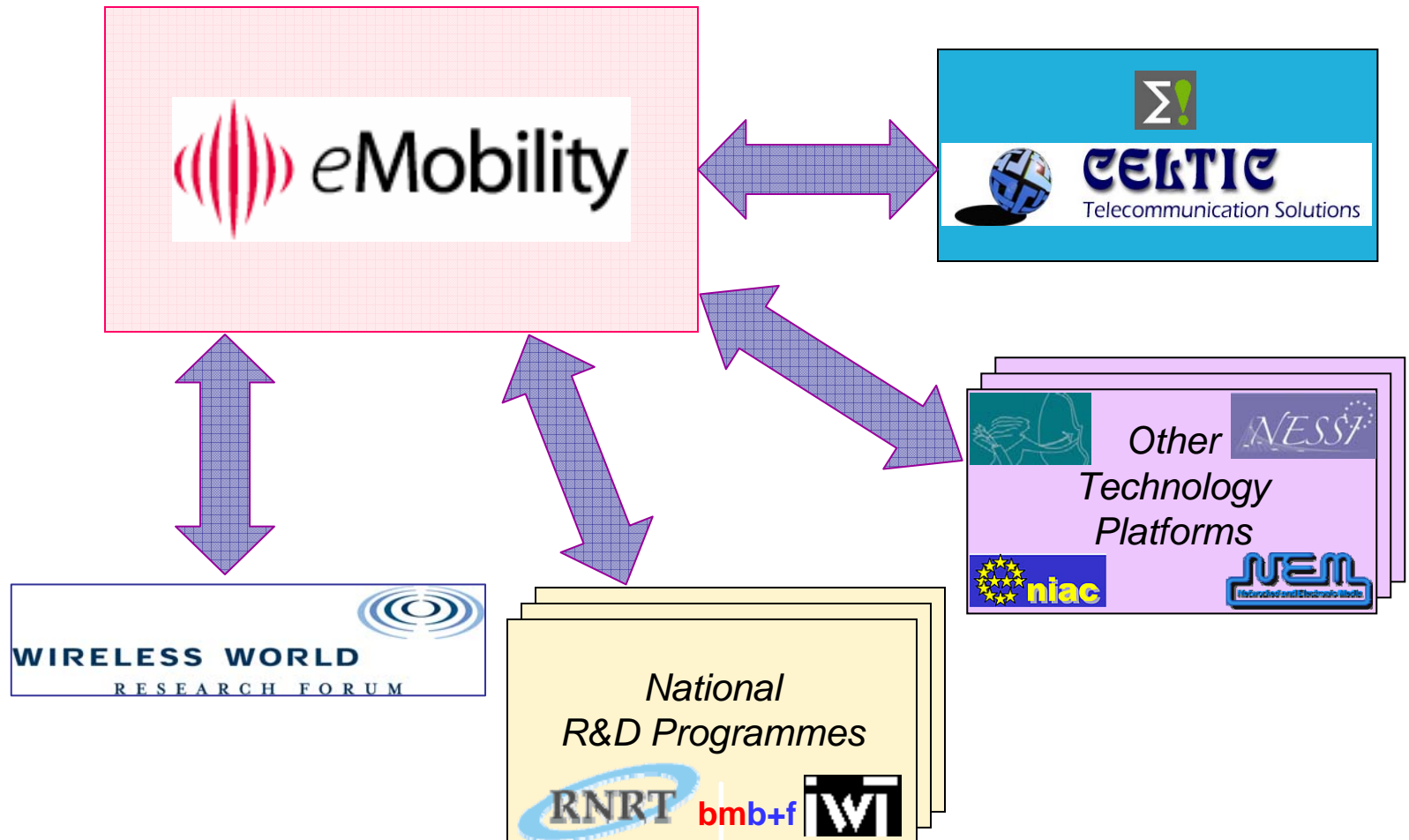
members:

- 114 industry
- 213 SMEs
- 193 Research
- 20 Liasons

# Organisation



# Links



# The Shared Vision



“Improving the **individual’s** quality of life, achieved through the availability of an environment for the instant provision of and access to **meaningful, multi-sensory information and content**”

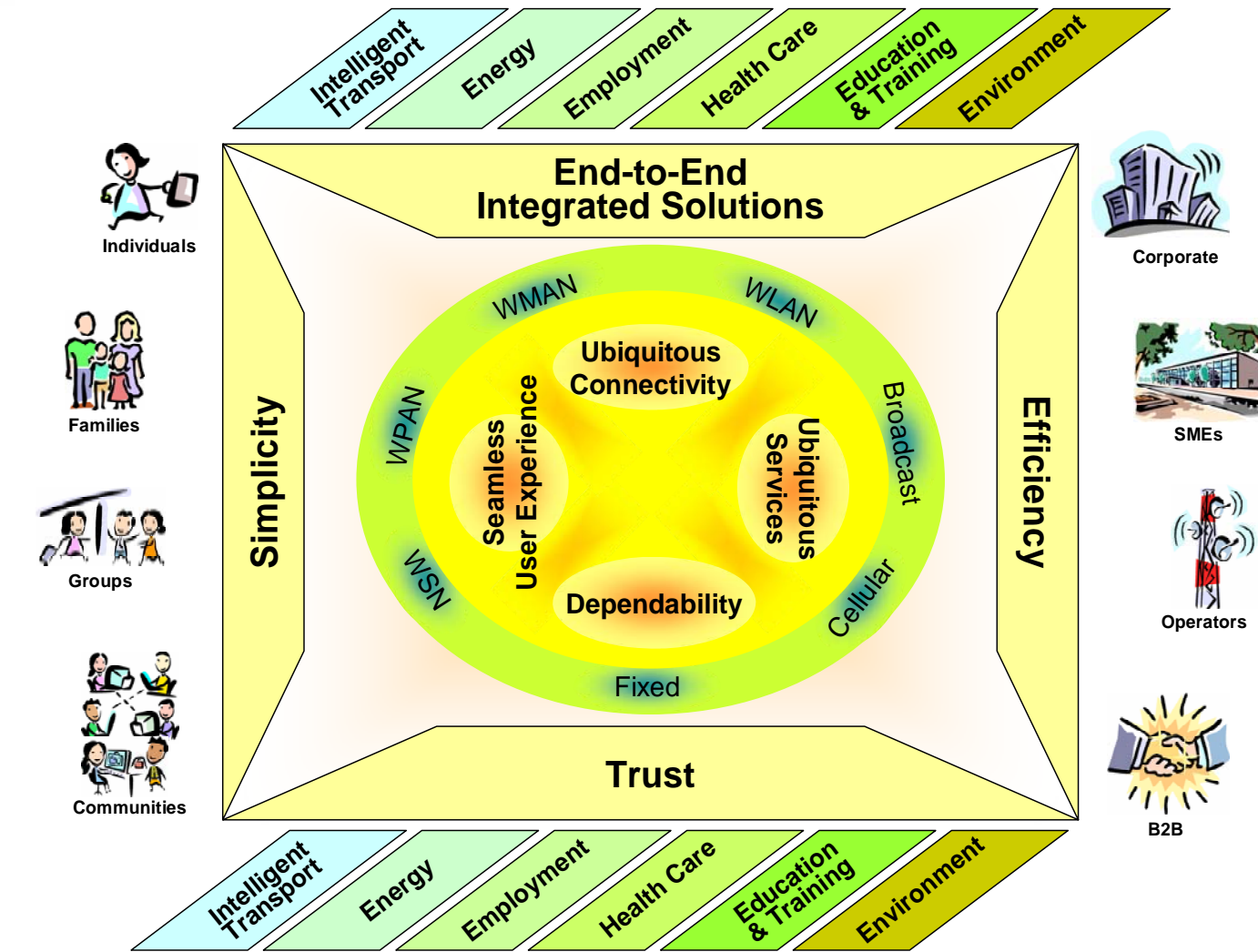
***Simplicity,***

***Efficiency &***

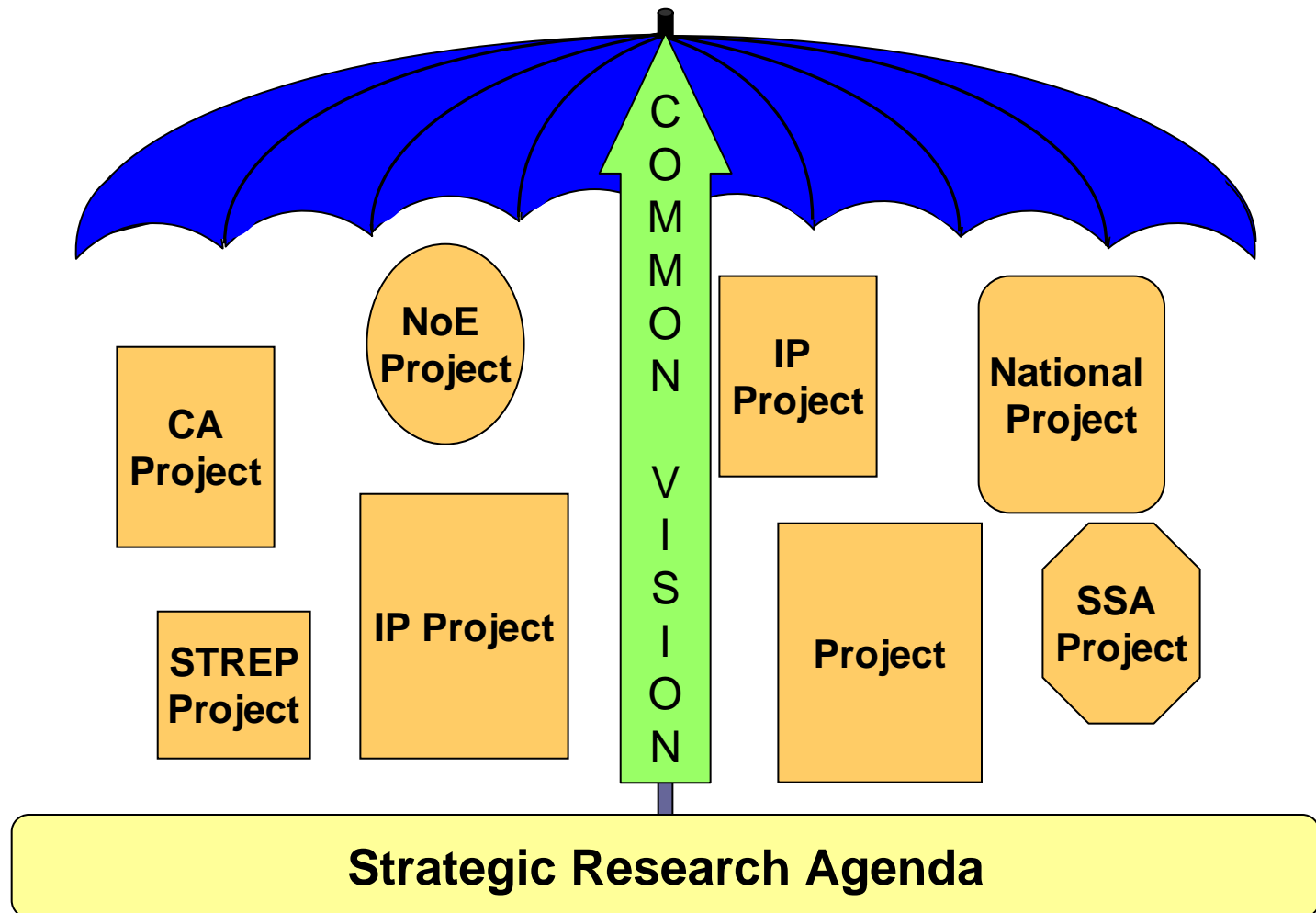
***Trust***



# Context



# FP7 Projects



# Objectives of WG on Apps.



- To establish further links between M&W Comms. and other areas.
- To find new applications for M&W Comms..
- To get disruptive ideas for R&D in M&W Comms..
- To gather further contributions to the SRA (Strategic Research Agenda).
- To establish an SAA (Strategic Applications Agenda).

# Focus



- The SAA (Strategic Applications Agenda) will focus on:
  - Health & Inclusion
  - Transport
  - Environment
  - Enabling Technologies

# The Tasks



- The tasks are to:
  - “list” services and applications, and their scenarios;
  - analyse requirements and barriers;
  - get sector plans and discuss road map;
  - liaise with ETPs;
  - ...

# The Approach



- The approach is to:
  - use desk research,
  - use web based tools,
  - establish an Inter-Platform Applications Expert Advisory Group,
  - publish calls for ideas and contributions,
  - solicit input from projects and programmes,
  - organise workshops.

# Previous Speakers (1) eMobility

- Dr. Piet Verhoeve, Televic, Belgium:  
*integrated healthcare solutions.*

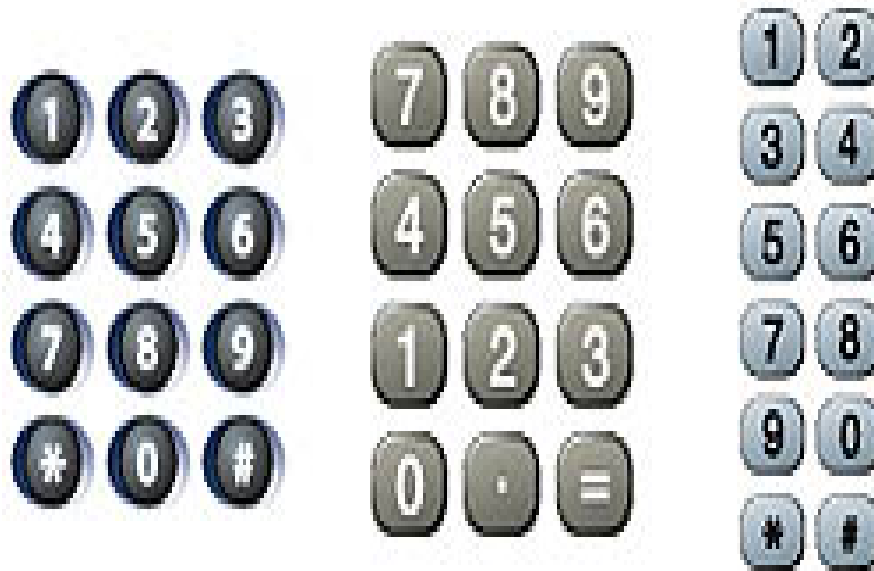


Technical and non-technical challenges have been identified.

# Previous Speakers (2) eMobility

- Dr. John Gill, Royal National Institute of Blind People, UK:

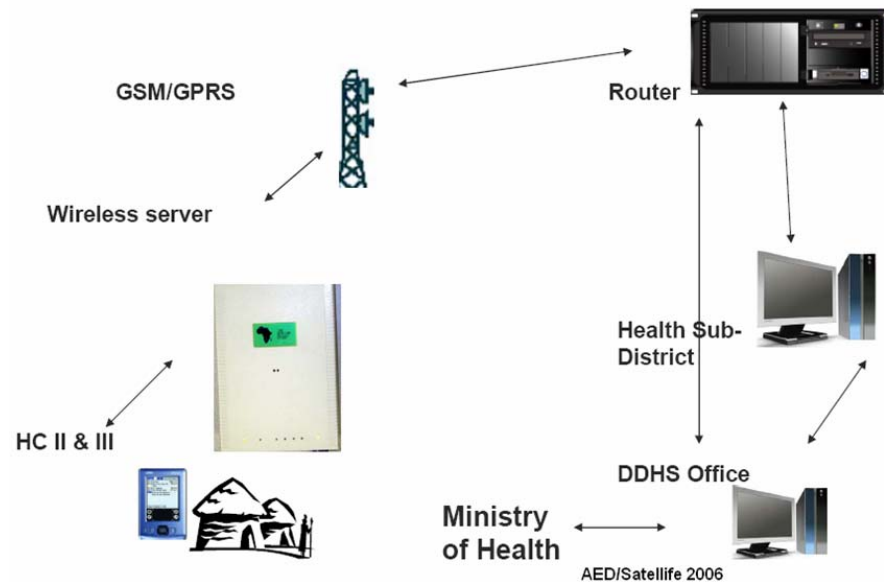
*guidelines for accessibility*



Good design  
for people  
with  
disabilities is  
frequently  
good design  
for everyone.

# Previous Speakers (3) eMobility

- Mr. Adesina Iluyemi, University of Portsmouth, UK:  
*eHealth for developing countries*



Technology may provide the much lacking access to health care.

# Conclusions



- The WG on Applications includes **eHealth and Inclusion** as one of the focus areas.
- A Strategic Applications Agenda will be established.
- Contacts with colleagues outside the “communications world” are being sought.

<http://www.emobility.eu.org>